



Connecting Technology and Tomorrow

**Quality certified To**

ISO 9001, ISO 14001, IATF 16949, ISO 45001  
 A2LA(TESTING CERT. #882.01), API-20E, TPG-HT  
 KS B1002, KS B1010, EN & UKCA 15048 & 14399  
 Dast Richtlinie 021, JIS 1186, PED, EN 10204 type 3.1

**Contact**

Jay Lee  
 jylee@kpf-global.com

**KPF USA**

1701 E. Lake Ave. #442  
 Glenview, IL 60025  
 TEL. 1-847-730-3376 / FAX. 1-847-510-0580  
 www.kpf-global.com

**KPF Korea / KPF VINA(Vietnam) – Products Capabilities**

Each production facility is equipped with both hot and cold Bolt and Nut formers, heat/surface treatment, in-house plating(Zinc, Zinc Yellow, HDG, Geomet) and a variety of additional finishes/patching available upon request. We produce standard and per print fasteners for the Construction, Heavy Equipment, Petrochemical, Wind Power and many other industries. With our continued global expansion, we are continuously developing new products to meet our customer demands and requirements.

**[ Construction ]**

Description	Specification	Range (Nom. Dia)
Tension Control Bolts, Nuts & Washers (Torque Shear Bolts)	ASTM F3125, F2280, F1825 EN 14399-10(HRC)	1/2" ~ 1 1/2" M12 ~ M36
Heavy Hex Structural Bolts, Nuts & Washers	ASTM F3125 A325, A490 DIN 6914, AS 1252 EN 14399-3, 4(HR, HV)	1/2" ~ 1 1/2" M12 ~ M36
High Tension Bolts, Nuts & Washers	BS 4395 JIS B1186 KSB1010	M12 ~ M36

**[ Heavy Equipment & Machinery ]**

Description	Specification	Range (Nom. Dia)
Hex Cap screws	DIN 931/933, ISO 4014/4017	1/4" ~ 2 1/2" M6 ~ M64
Carriage Bolts	ANSI B18.5	
Square Head Bolts	ASME B18.2.1	5/8" ~ 1" 3/8" ~ 2 1/2" 3/8" ~ 1 3/8"
Collar Bolts	ANSI B18.2.1	
T-Head Bolts	JIS B1180	3/8" ~ 1 1/4"
Fitting Up Bolts	IFI, SAE J429, AS1110,	
Plow Bolts	ANSI B18.9	1/2" ~ 2 1/2" M12 ~ M64
Track Shoe Bolts	Drawing	
Segment Bolts	Drawing	1/2" ~ 1 3/8" 3/4" ~ 7/8"
Knurled Wheel Bolts	Drawing	
Square Nuts / Heavy Hex Jam Nuts	ANSI B18.2.2	1/2" ~ 1 3/8" 3/4" ~ 7/8"
Hex Thick Nuts	ANSI B18.2.2	
Track Square Nuts	Drawing	3/4" ~ 7/8"
Guide Square Nuts	Drawing	

**[ Petrochemical Plants ]**

Description	Specification	Grade	Range (Nom. Dia)
Stud Bolts Thread Rod	ASTM A193, A320 ANSI B16.5 , API-20E Din 975 ASME B18.31.3	B7 , B7M B8 L7, B16	1/4" ~ 3" M6 ~ M76
Heavy Hex Nuts	ASTM A194/A194M ANSI B18.2.2, API-20E	2H, 2HM 7L, 7M	1/2" ~ 2 1/2" M12 ~ M64
Heavy Hex Bolts	ASTM A193 ASTM A320 API-20E	B7 L7	1/2" ~ 2 1/2"

**[ Wind Power ]**

Classification	Description	Specification	Range (Nom. Dia)
Blades	T-bolts on blade set for windmill	Drawing	M30 ~ M36
	Barrel-nuts on blade set for windmill	Drawing	M30 ~ M36
Towers	Tower flange set for windmill	Drawing DASt-021 EN14399-4(HV)	M12 ~ M64
Base	Bolts	Drawing	Max. M64 x 4,000 mm



Connecting Technology and Tomorrow

**Quality certified To**

ISO 9001, ISO 14001, IATF 16949, ISO 45001  
A2LA(TESTING CERT. #882.01), API-20E, TPG-HT  
KS B1002, KS B1010, EN & UKCA 15048 & 14399  
Dast Richtlinie 021, JIS 1186, PED, EN 10204 type 3.1

**Contact**

Jay Lee  
jylee@kpf-global.com

**KPF USA**

1701 E. Lake Ave. #442  
Glenview, IL 60025  
TEL. 1-847-730-3376 / FAX. 1-847-510-0580  
www.kpf-global.com



Hex Cap Screws



Hex Flange Screws



Socket Bolts



Carriage Bolt



Structural Bolt & Set



Stud Bolt & Set /  
Thread Rod



Wheel Bolt



12Point Flange Screw



Cylinder Head Bolt



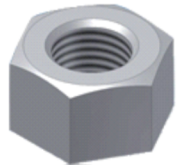
Plow Bolt



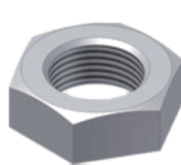
Tension Control bolt



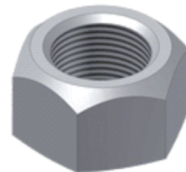
Double End Stud



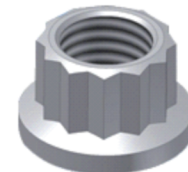
Heavy Hex Nuts



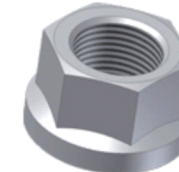
Stud Bolts / Thread Rod



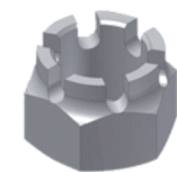
Track Shoe Bolts, Nuts



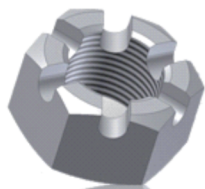
Square Bolts, Nuts



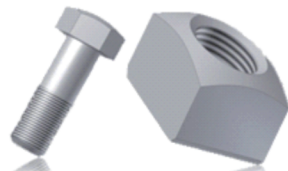
Tension Control  
Bolts, Nuts, Washers



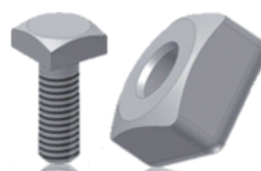
Heavy Hex Structural  
Bolts, Nuts & Washers



Hex Socket Countersunk  
Flat Head Cap Screws



Round Head Square  
Neck Bolts



Hexagon Socket Button  
Head Screws



Double End Stud

**PLATING OPTIONS**

- Phosphate & Oil
- Zinc Clear & Yellow + CoF Control (Sealer)
- Zinc Nickel
- Hot Dip Galvanized
- Zinc Flake (Geomet, Delta, Zintek, Magni)