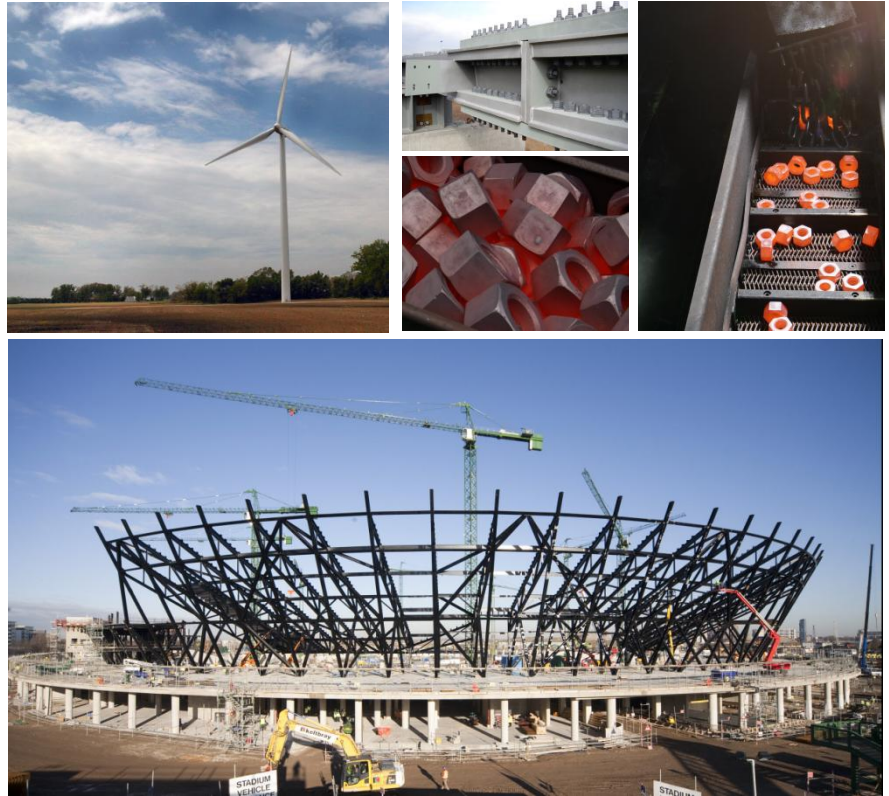


Creating The Fundamentals





We are continually positioning ourselves at the forefront of the ever changing global market.

To maintain the quality and reliability of KPF products, we are continuously expanding our facilities and applying the latest technologies.

KPF produces...

Hot forging product

Through our hot forging process we can make a variety of products ranging in size from $\phi 19$ to $\phi 105$. We are also highly experienced in manufacturing a variety of industrial use products, such as nuts and bearings. We have a comprehensive forging facility that can handle a wide variety of steels including tough alloy and bearing steels as materials for coils. We use our own forming technology that can prevent excess flash in bolts, thus producing a clean bolt directly from the mold. Our mold technology enables us to make 100% of the forging molds in-house.

Cold forging product

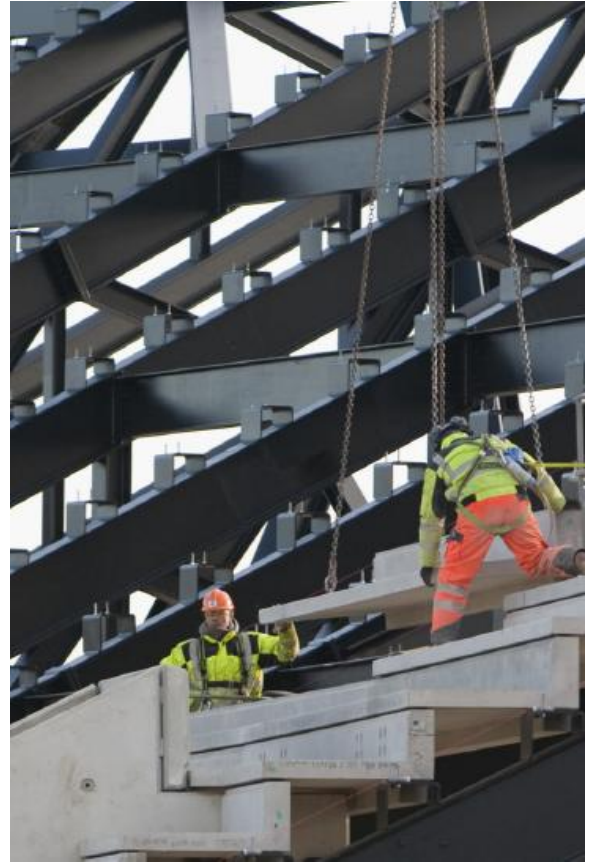
Through our cold forging process we can produce industrial spanners ranging from M8 to M36, which are widely used in automotive components. Our cold forged products are renowned for their durability and precision which is necessary for the steering wheels, transmission components and engine blocks of automobiles. In particular, the quality of our sockets, valves and cases is highly regarded in the global market.

Bearings

Both the inner and outer races of our automotive hub bearings are produced through a continuous process line from forging to final QT. They are our representative items that meet the stringent requirements of our customers.

Construction

KPF was the first in Korea to develop the T/C BOLT, and has been advancing the fastener technology necessary for steel structures. KPF products have been widely used for a variety of high-profile construction projects both at home and abroad, including the Yeongjong Bridge, Incheon Bridge, Gwangang Bridge, Tower Palace, San Francisco BAY BRIDGE, MIAMI AIRPORT and the 2010 SOUTH AFRICAN WORLD CUP STADIUM.



PRODUCTS RANGE

Description	Specification	Range
H/T BOLT,NUT,WASHER2	KS B1010, JIS B1186, BS 4395	M12-M36
T/C BOLT,NUT,WASHER	KS B2819, JSSII-09, ASTM F1852, ASTM A325 /A325M, ASTM A490/A490M	M12-M30 (1/2"-1 1/8")
STRUCTURAL BOLT,NUT,WASHER	ASTM A325/A325M ASTM A490/A490M DIN 6914, AS1252	M12-M36 (1/2"-1 1/2")
COUPLING	PURCHASE ORDER	



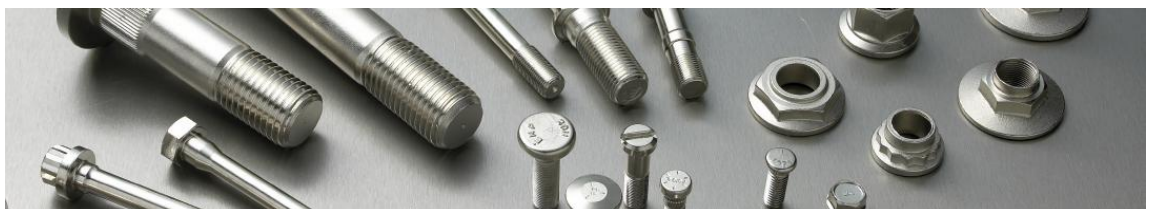
Automotive

KPF produces forged products, such as hubs, steering system components, transmissions, engine blocks and chassis components, many of which are used in world-famous automotive brands such as GM, Ford, BMW, Audi, Volvo, Ferrari, Fiat, Renault, PSA, Nissan, Hyundai and KIA.



PRODUCTS RANGE

Description	Specification	Range
BEARING COMBI	PURCHASE ORDER	Out Dia 35-105mm Height 25-80mm
BEARING INNER RACE		
BEARING OUTER RACE		
GEAR BLANK		
BOSS (RING)		
PINION GEAR		
PISTON RING		
GEAR CLUTCH		
SLEEVE SYNCRO		
PULLEY		
RING SLOT		Cutting Dia 16-43mm Cutting Length 9-230mm Die K.O. 45-250mm
SLEEVE		
CASE		
CORE		
HOUSING		
PLATE		
PLUG		
SHAFT		
SOCKET SHELL		
VALVE		





Heavy Equipment

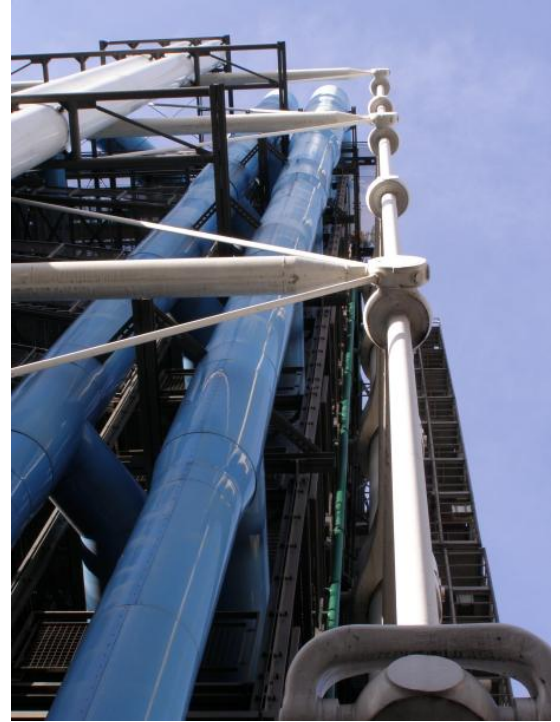
KPF was the first in Korea to develop collar bolts in the 1970's and has been supplying them ever since. We have been contributing to the development of the domestic machinery and heavy equipment industries by continuously

Description	Specification	Range
12POINT FLANGE NUT	PURCHASE ORDER	5/8" - 1-1/2"
12POINT FLANGE SCREW	IFI 115	3/8"-1 1/2"
CASTLE NUT	PURCHASE ORDER	
CYLINDER HEAD BOLT	PURCHASE ORDER	M10-M24
GUIDE BOLT/NUT	PURCHASE ORDER	
HEX BOLT	JIS B 1180	
HEX CAP SCREW	JIS B 1180	
HEX CONE NUT	IFI 10/107	
HEX FLANGE SCREW	IFI 111 IFI 536	M8-M20 (3/8"-3/4")
HEX FLANGE NUT	SAE J995 IFI 100/107	
HEX JAM NUT	ANSI/ASME B18.2.2	
HEX SOCKET HEAD CAP SCREW	ANSI B18.3 DIN 912	M8-M64 (3/8"-2 1/2")
LOCK NUT	SAE J995 IFI 100/107	
PLOW BOLT		
SLOTTED NUT	ANSI/ASME B18.2.2	
SQUARE BOLT/NUT	PURCHASE ORDER	
TOWER BOLT,NUT,WASHER		
TRACK SHOE BOLT/NUT		
TWO PIECES WHEEL NUT	PURCHASE ORDER	
WEDGE BOLT/NUT	PURCHASE ORDER	
WHEEL BOLT		3/8"-1"
WHEEL NUT	PURCHASE ORDER	



Petrochemical Plant

KPF stud nuts & bolts and heavy hex bolts are supplied to major petrochemical plant construction sites both at home and abroad, such as for major petrochemical complexes at GS Caltex Yeosu, Ulsan and Daesan, and for petrochemical plants in the Middle East, Indonesia, Texas and along the North Sea.



PRODUCTS RANGE

Description	Specification	Range
STUD BOLT, NUT	ASTM A193/A193M, ASTM A320/A320M, ANSI B16.5, JIS G4107, DIN 9768, BS 4882	M12-M64 (3/8" - 3-1/2")
HEAVY HEX BOLT	ASTM A193/A193M ASTM A320/A320M	M8-M64 (3/8" - 2-1/2")
HEAVY HEX NUT	ASTM A194/194M ASTM A563/A563M	M12-M64 (1/2" - 2-1/2")



Wind Power

KPF produces nuts and bolts used for wind power generation equipment, such as high-tensile nuts and bolts for flange assemblies for power generators and blades. We supply them to leading wind power generation companies such as GE Wind and Unison. We have since defined the wind power generation market as a new market and are concentrating our quality and technical efforts on this area.



PRODUCTS RANGE

Description	Specification	Range
STRUCTURAL BOLT,NUT,WASHER	DIN 6914, 6915, 6916	
T-BOLT	PURCHASE ORDER	
BARREL NUT	PURCHASE ORDER	
FOUNDATION ANCHOR BOLT	PURCHASE ORDER	



OEM

KPF is supplying fasteners to the shipbuilding and heavy equipment industries on an OEM basis. We have defined the shipbuilding and heavy equipment industries as new markets, and are doing our best to improve quality and develop new products.



PRODUCTS RANGE

Description	Specification	Range
COLLAR STUD	PURCHASE ORDER	
8.8 HEX BOLT		
EYE BOLT		
FLANGE HEX PLUG BOLT		
U-BOLT		
SOCKET HEAD BOLT		
8.8 COUNTERSUNK BOLT		
HEXAGON PLUG		
HEXAGON PLUG WITH FLANGE		
HEXAGON SOCKET PLUG		
HEXAGON FIT B		



Equipped with both hot and cold forging facilities, KPF has been continuously expanding its manufacturing facilities at the Chungju Plant, the best in the industry, and improving our production lines.



Find out more online

More information is available at
www.kpf.co.kr
The website contains all you want to know
about KPF and products

If you require any further assistance or technical information, please contact



America Division

Willis Kim / Manager
Tel : 82-43-849-1211
Cell : 82-10-2291-9493
Fax : 82-43-849-1234
E-mail : yykim@kpf.co.kr

Europe-Asia Division

Moonwoo Park / Manager
Tel : 82-43-849-1303
Cell : 82-10-8803-0452
Fax : 82-43-849-1234
E-mail : mwpark@kpf.co.kr

